

## PRODUCT OVERVIEW

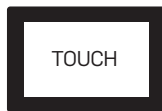
## DIMENSIONS

# VFACE

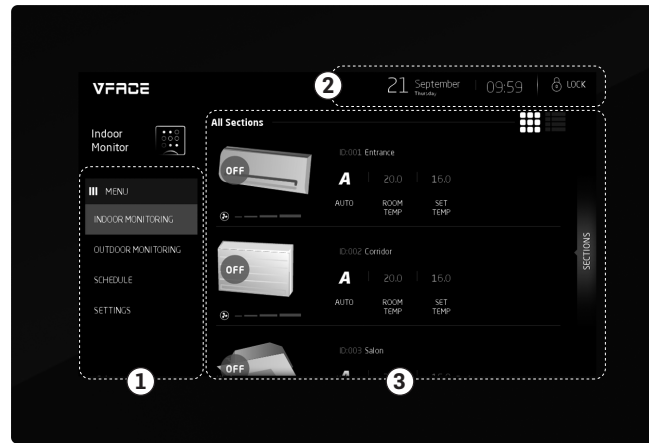
## QUICK INSTALLATION GUIDE

### ULTIMATE VRV/VRF GATEWAY

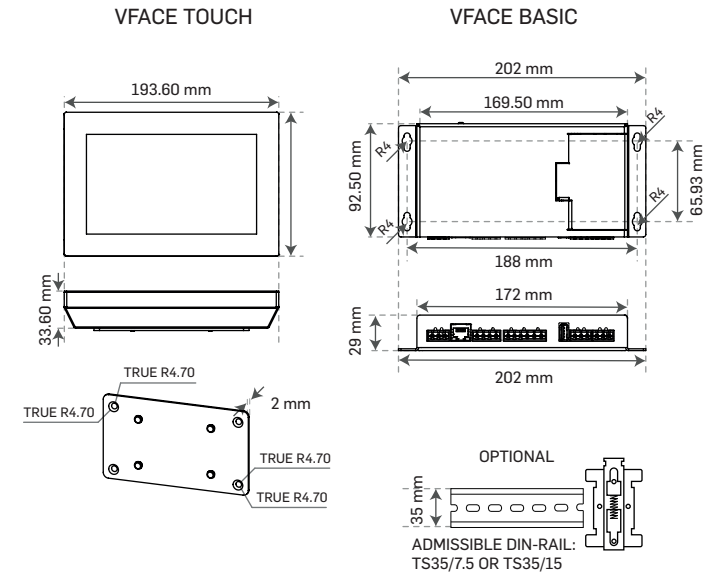
Version VFC-QI03-202002  
www.vface.eu



**ASTRUM**  
TECHNOLOGY



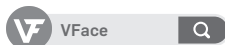
- 1 Menu Bar**
  - Indoor Monitoring
  - Outdoor Monitoring
  - Schedule
  - Settings
- 2 Information Bar**
  - Date
  - Time
- 3 Dashboard**
  - Indoor Unit List
  - View Options
  - Sections



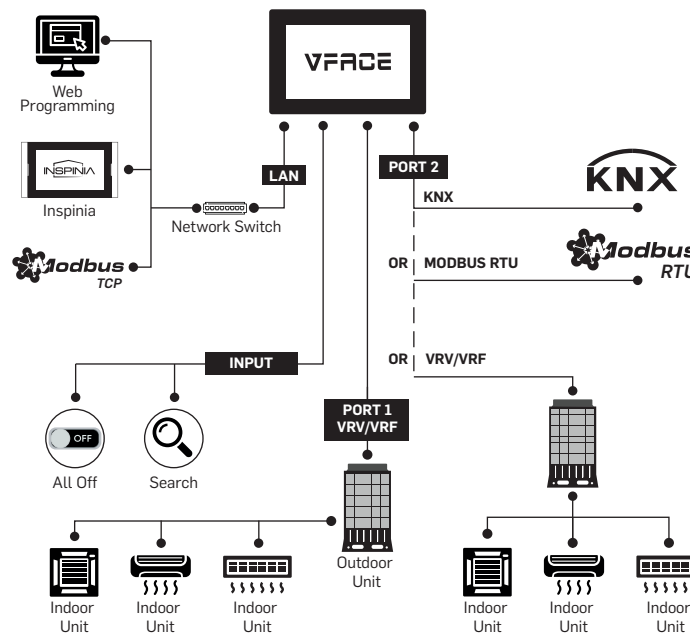
## MOBILE APP



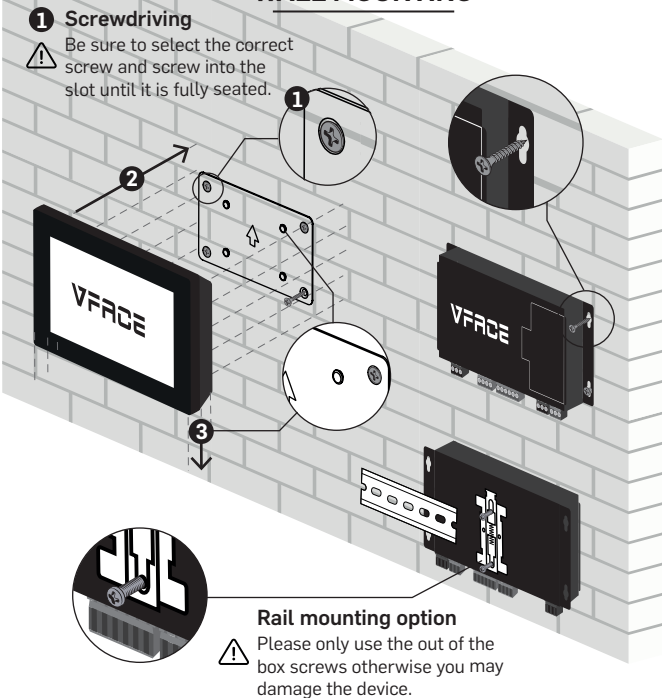
- Download VFace mobile app from App Store or Google Play to your mobile device.
- Press add button and scan QR-code on your mobile app.
- Make sure that VFace has proper internet access and port forwarding done for 8080 port.
- Unique device ID and QR-code will be generated on settings page.
- Define a name and save your settings. You are ready!



## FEATURES & FUNCTIONALITY

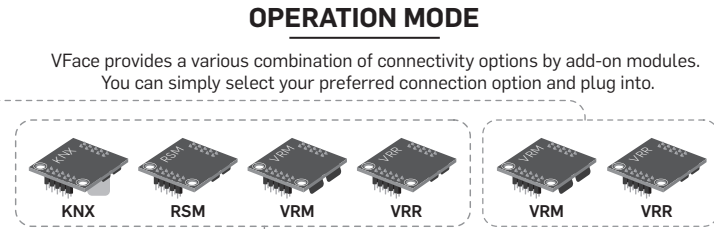
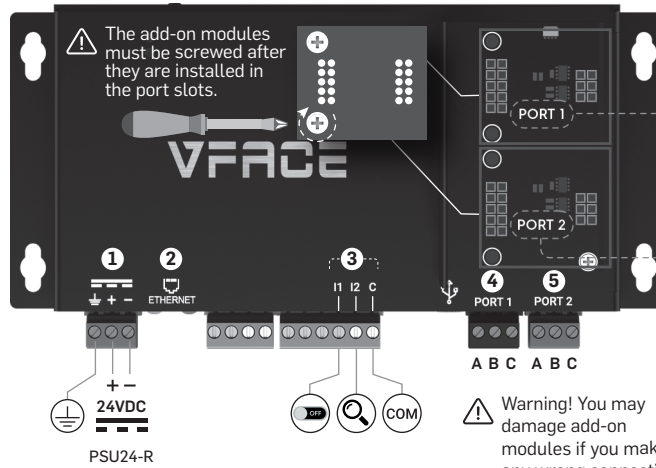
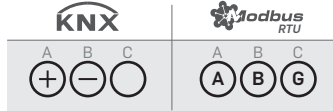


## WALL MOUNTING



## CONNECTIONS

- Power Supply:** 12V/24V 2A (DC)
- Ethernet:** 10M/100M/1000M (IEEE 802.3)
- Inputs (I1-I2):** Digital Inputs: Emergency Input, Search Input
- Port 1 Connector:** VRV/VRF Bus connection  
Port for VRV/VRF add-on modules (VRM, VRR)
- Port 2:** Port for BMS add-on modules and VRV/VRF  
**Port 2 Connector:** Bus connection (KNX, MODBUS, VRV/VRF) (KNX, RSM, VRR, VRM)



PORT 1	PORT 2	OPERATION MODE
VRV/VRF	-	Web control (64 Unit) + Modbus TCP
VRV/VRF	KNX	Web control (64 Unit) + KNX
VRV/VRF	RSM	Web control (64 Unit) + Modbus RTU
VRV/VRF	VRV/VRF	Web control (128 Unit) + Modbus TCP

### HVAC Connection Ports

Each brand of HVAC have different communication terminals on outdoor unit. Please check below table for terminals connections.

BRAND	DAIKIN	HITACHI	LG	MITSUBISHI ELECTRIC	MITSUBISHI	Midea	Panasonic	SAMSUNG	CHIGO	TOSHIBA
<b>Terminal Name</b>	A B C	A B C	A B C	A B C	A B C	A B C	A B C	A B C	A B C	A B C
<b>4 Port 1 5 Port 2 connector</b>	F1 F2	1 2	A B	M1 M2	A B	X Y E	U1 U2	F1 F2	X Y E	U1 U2
<b>Comm. Line</b>	D3 NET	TCC LINK	INTER A B	M NET (TB3/7)	S SLINK I / II		S3 NET			TCC LINK
<b>Indoor Unit</b>	64	64	128	50	64	64	64	64	64	64
<b>Outdoor Unit</b>	16	16	NO SUPPORT	10	NO SUPPORT	16	NO SUPPORT	16	16	NO SUPPORT

### CONFIGURATION

- All configurations of VFace Gateway can be made through web interface.

Default IP Address: 192.168.2.100  
Port number: 8080

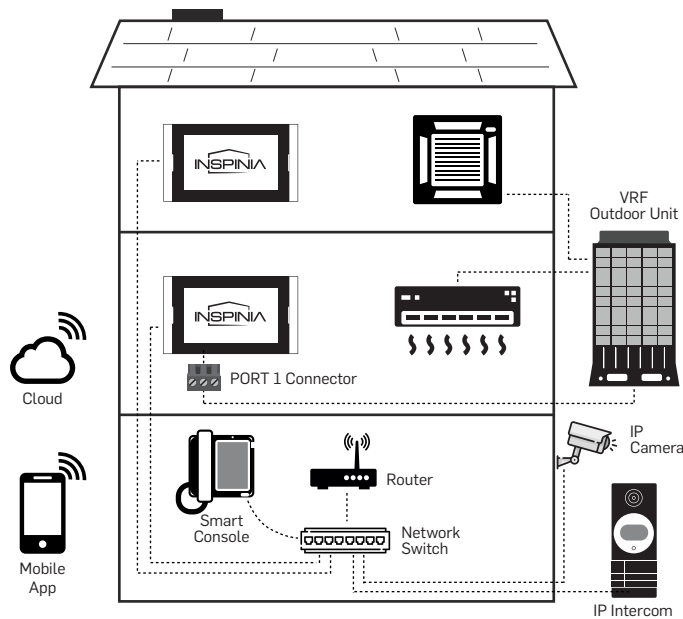
- Enter IP address and port number to web browser.

Example: 192.168.2.100:8080  
Username: admin Password: admin

- Default Security Password: 1234
- For more detail please check for Programming\_Guide.pdf visit [www.astrum.eu](http://www.astrum.eu)

## HVAC VRV/VRF SOLUTIONS

### 1. MODULE



There are two options of monitoring and controlling VRV/VRF units on INSPINIA:

### 1. MODULE

- VRV/VRF add-on module must be plugged to INSPINIA Port 1
- Port 1 connector will be directly connected to VRV/VRF Outdoor Unit
- Control of Indoor unit available only on one INSPINIA Panel
- Provides full functionality of indoor unit on INSPINIA Panel
- Indoor units can be controlled by KNX and MYHOME Thermostat
- Supports up to 64 indoor units
- Full control on indoor unit functions

### 2. VFACE

- VFace Basic or VFace Touch is required and need to be installed
- No direct connection to Outdoor Unit with Port 1
- Provides full functionality of indoor unit on INSPINIA Panel
- VFace lets up to 16 simultaneous connection of INSPINIA
- Indoor units can be controlled by KNX and MYHOME Thermostat
- Supports up to 64 indoor units
- Full control on indoor unit functions
- VFace communicates touch panels through IP

### 2. VFACE

